

Montagezeichnung / assembly drawing

Datafox GmbH
www.datafox.de
Tel.: +49(0)36967/595-0



Produkt / product

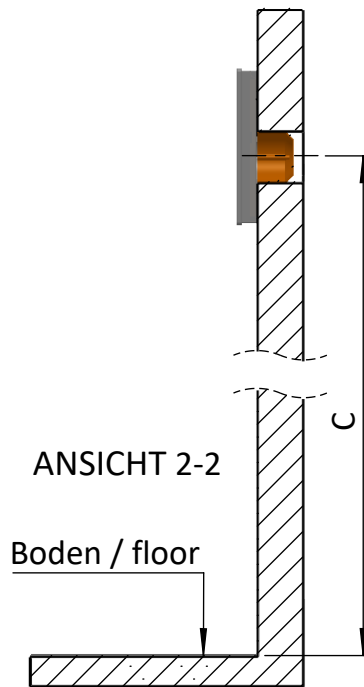
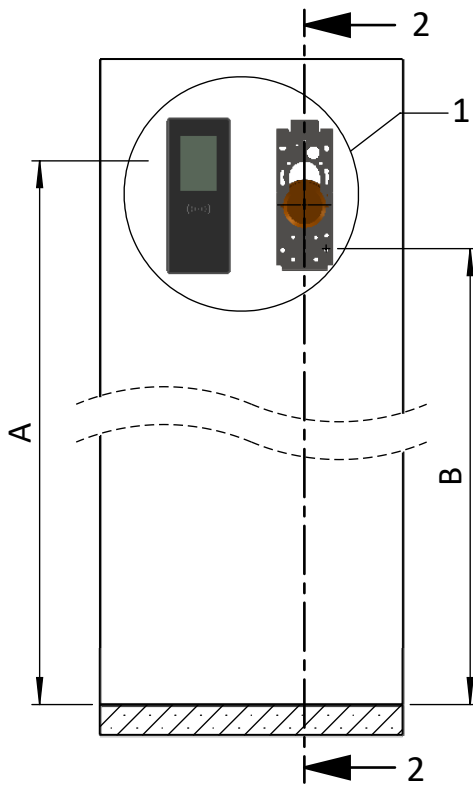
Datafox EVO 3.5 Universal / EVO Agera

Verfasser / author

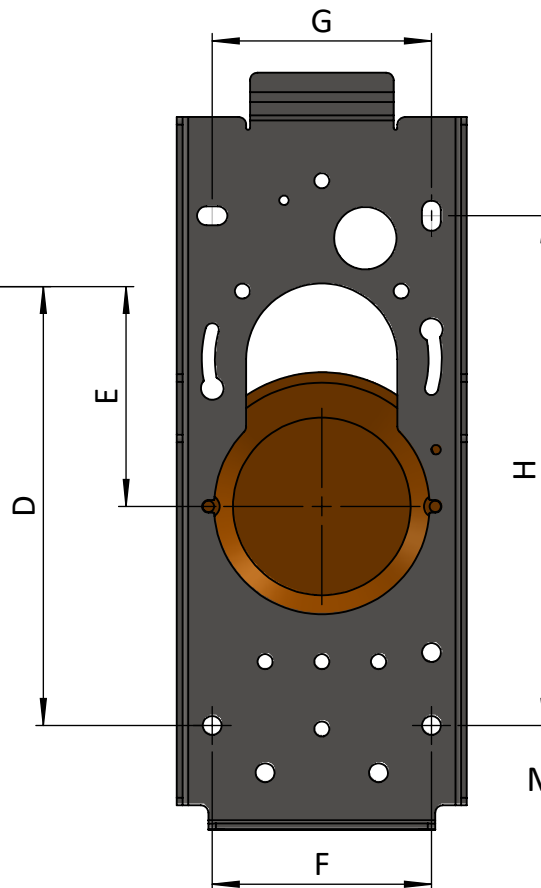
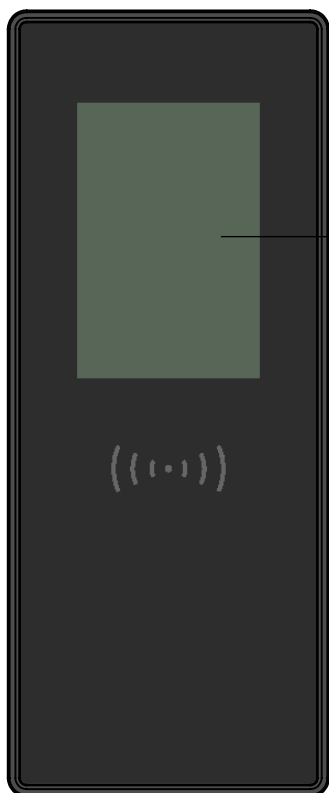
M. Gutmann

Datum / date

27.03.2019



empfohlene Einbauhöhe recommended installation height	A
Höhe Montagebohrung Wandhalterung Height of mounting hole Wall bracket	B
empfohlene Höhe Kabelausgang / UP-Dose recommended height cable outlet / flush-mounted box	C
Abstand zwischen A und B Distance between A and B	D
Abstand zwischen A und C Distance between A and C	E
Bohrungsabstand unten Hole distance bottom	F
Bohrungsabstand oben Hole distance top	G
Bohrungsabstand vertikal Hole spacing vertical	H



DETAIL 1
Masstab / Scale 1 : 2

Produkt / product	A	B	C	D	E	F	G	H
EVO 3.5 Universal ohne FP / without FP	1350	1234	1292	116	58	58	58	135
EVO 3.5 Universal mit FP / with FP	1250	1134	1192					
EVO Agera ohne FP / without FP	1350	1260	1290	121	24	58	58	135
EVO Agera mit FP / with FP	1250	1160	1190					

alle Angaben in mm / all specifications in mm